

# Polebox 330 D

next  green

Mounting and installation products E-mobility  
EV-charger pole mount  
NEXT GREEN - POLEBOX 330 D

## Model

E-No:  
27 002 50

Product name:  
Charging box holder Polebox 330 D



## Technical specifications

**Material**  
Color

Steel, High-strength steel  
Graphite Grey

### Dimensions

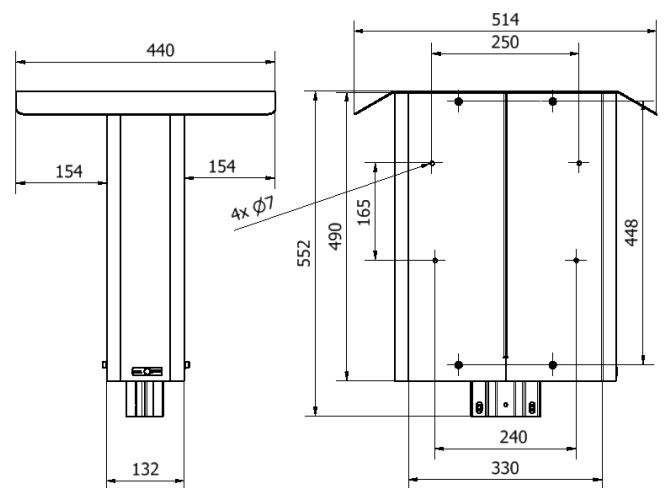
Weight 12 kg  
Height 552 mm  
Width 514 mm  
Depth 492 mm  
Mounting surface 330 mm

### Packaging dimensions

Weight 12 kg  
Height 570 mm  
Width 390 mm  
Depth 350 mm

## POLEBOX 330 D FEATURES

- Precut hole pattern for Charge Amps Aura
- Designed to suit two EV-chargers back-to-back
- For mounting on  $\varnothing$  60 mm steel tubes
- Most of the installation can be prepared indoors
- Robust steel construction
- Distribution block (1.5mm<sup>2</sup> - 25mm<sup>2</sup>)
- Prepared for mounting an earth fault circuit breaker, 3G / 4G router
- Powder coated, available in various colors. Contact Next Green for more information



Hålbild Charge Amp Aura  
Vikt: 11,7 kg

**Next Green Polebox** is a pole mount for charging boxes for mounting on a  $\varnothing$  60 mm steel tube. Polebox makes it easy, for example when changing from engine heater location to charging location and can therefore be used to replace an engine heater hood. The product is intended for feeding electrical cables inside the pole tube.

Polebox has a built-in distribution terminal for up to 2 x 5G25 power cable for extending the connection to the next charging post. From the distribution terminal in the Polebox, the respective charging box is then connected using a 5G2.5 rubber cable.

Polebox comes with a DIN rail to suit a residual current circuit breakers and can be fitted with an additional DIN rail for units

such as a Wi-Fi-router or a 3G/4G modem or power supply. Everything fits neatly inside the box. Polebox is made of Swedish steel and powder coated to provide the highest quality.

Polebox is made to fit many different EV-charger models. Screw holes for each charger are drilled upon installation. Polebox is very easy to install. It is prepared indoors by mounting charging boxes and unplugging the wiring from the dispersion terminal. Polebox is then put in place outside on the existing steel tube and the charger hood is lifted and fastened. This provides easy access for screwing supply wires into the plinth.

Polebox 330 has a precut hole pattern to suit two Charge Amps Aura.

next  green

Next Green AB  
Brudtallsvägen 14  
SE-792 32 MORA  
SWEDEN

www.nextgreen.se  
info@nextgreen.se  
Tel: +46 250 50 39 90