

next  green

Product catalogue

Mounting and installation products
E-mobility

Next Green Product catalogue 2022 Vol. 2



The **Next Green Way**

Shaping the world of EV-infrastructure

Sweden and the rest of the world is now witnessing one of the biggest technical disruptions of the last century – **the transition to electrically powered vehicles.**

Next Green specializes in in-house designed mounting and installation products. At Next Green we are proud to be able to provide our customers with the best solutions for every imaginable situation.

We love to get involved early in the project planning stage. We can suggest solutions and deliver products to electricians, property owners, companies, municipalities, destinations and private persons in residences.

At Next Green we develop, design, and manufacture our own products for mounting and installation of E-mobility products. Together with our

customers we bring unique products and solutions to the market. We offer a complete product range for everything you might need for installation of charging solutions for electrically powered vehicles. The products are both designed and made in Sweden.

At Next Green we develop, design, and manufacture our own products

Look no further – **Next Green is your One-Stop-Shop for charging solutions for electric vehicles.**

We call it **The Next Green Way.**

Welcome!

Product catalogue

Mounting and installation products
E-mobility

next  green

WALLPLATE

WALLPLATE



Page 5

DAYTONA

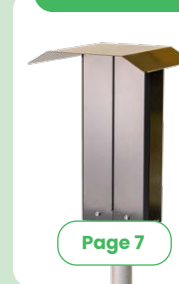
DAYTONA T2



Page 6

POLEBOX Series – Charging box mount for pole assembly

190 S



Page 7

205 D2



Page 8

270 S



Page 9

270 D



Page 10

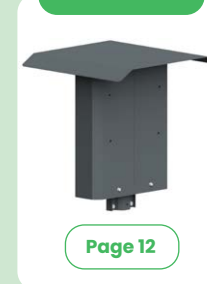
POLEBOX Series – Charging box mount for pole assembly

330 S



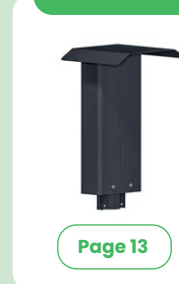
Page 11

330 D



Page 12

205 ES



Page 13

205 ED



Page 14

POLEPLATE Series

160 E



Page 18

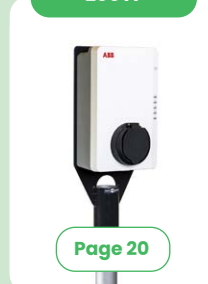
165



Page 19

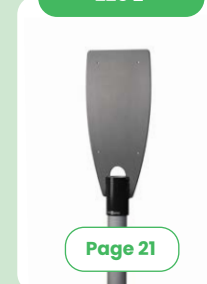
POLEPLATE Series – Charging box mount for pole assembly

200 A



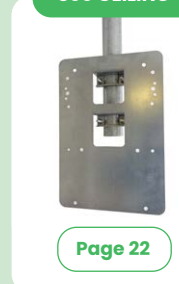
Page 20

225 Z



Page 21

300 CEILING



Page 22

330



Page 23

Pole

Charging box pole



Page 24

Protection

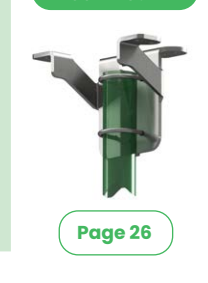
Collision protection



Page 25

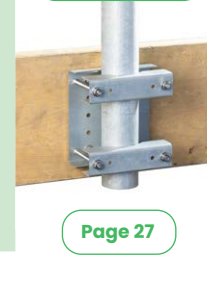
Steel tube mounts

Ceiling and floor mount



Page 26

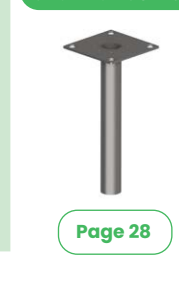
Beam mount



Page 27

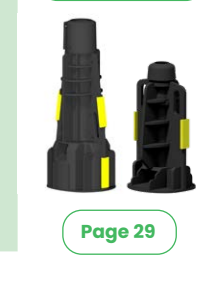
Foundations & Ground mounts

Ground mount GP60-160 Combo



Page 28

GP108 & GP60



Page 29

CONTACT US

Questions regarding Next Green's products? Welcome to contact us directly:

+46 250-50 39 90 or:
info@nextgreen.se

Fast service is important to us. We are always just a phone call away.



Wallplate

Mounting and installation products
Charging box wall mount
NEXT GREEN WALLPLATE 250

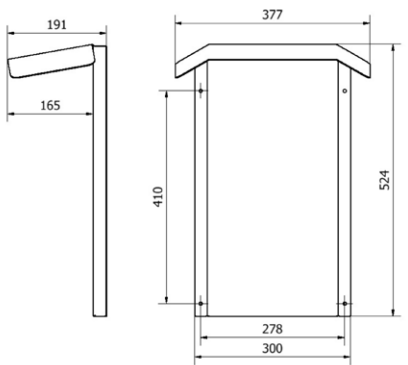
Model

E-No	Product name
24 803 68	Wallplate 250
S-No	
34 079 02	



FEATURES WALLPLATE

- For mounting an EV-charging station on a wall
- Facilitates mounting on uneven surfaces
- Wiring can be done behind the Wallplate
- Protects EV-charging station and the wall
- Powder coated, available in an assortment of colours. Contact Next Green for more information



Technical specifications

Material	Steel plate
Color	Graphite grey
Dimensions	
Weight	3 kg
Height	524 mm
Width	377 mm
Depth	191 mm
Package dimensions	
Weight	4 kg
Height	550 mm
Width	380 mm
Depth	200 mm

The Next Green Wallplate is a universal wall mounting plate for EV-chargers. Wall plate creates a stable and even mounting surface on uneven wall surfaces and minimizes movement forces that can otherwise occur at the back of the charger. The Wallplate can accommodate many different charger models of different sizes. The built-in roof protects the charger from rain. The Wallplate provides a solid and robust wall mount for chargers. The screw holes for each charger model are drilled directly into the plate during installation.

SELECTION OF COMPATIBLE CHARGING BOXES

- ABB Terra AC
- Charge Amps Halo
- Easee Home
- Easee Charge
- Elinta Homebox Slim
- Ensto One
- Ensto Home
- Garo GLB
- Norwesco Refuel
- Schneider EVlink Home
- Wallbox Pulsar
- Wallbox Copper SB
- Wallbox Commander
- Zaptec Go



Accessories

Cable holder for mounting direct on the wall or Wallplate.

E-No	Product name
24 803 56	Cable holder
S-No	
34 079 00	Daytona T2



Daytona T2

Mounting and installation products
EV-charger cable holder
NEXT GREEN DAYTONA T2

Model

E-No	Product name
24 803 56	Cable holder Daytona T2
S-No	
34 079 00	



Technical specifications

Material	Steel
Color	Graphite grey
Dimensions	
Weight	1 kg
Height	197 mm
Width	244 mm
Depth	78 mm
Package dimensions	
Weight	1 kg
Height	220 mm
Width	240 mm
Depth	95 mm

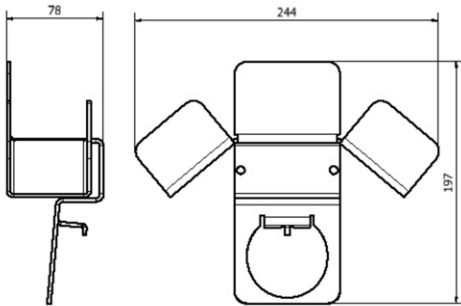
Next Green Daytona T2 is a handy and tidy holder for your charging cables.

Daytona T2 is made of steel and designed to keep your charger cables nice and organized and extend the cables' life span. The Type 2 socket is secured in place. The charging cable holder is designed by Next Green and manufactured in Sweden to suit the Nordic climate. The cable holder can be installed on a wall or on a pole. When used on a wall, the holder protects the wall from damage from the cable.

Daytona T2 comes powder coated with screws and dowels for wall installation.

FEATURES DAYTONA T2

- Keeps your charging cable neatly in place
- Robust and sturdy steel construction
- Can be mounted to both walls and steel tubes with a bracket set (option)
- Secures cable socket in the holder mount
- Angled design for water drainage of charging glove T2.
- Powder coated, available in an assortment of colours. Contact Next Green for more information.



Example image. Mounting on Ø 60 mm pole tube with accessory bracket assembly

Accessories

Bracket assembly for installation on a Ø 60 mm pole. Pole is ordered separately using separate product number.

E-No	Product name
24 803 67	Bracket set for mounting on Ø 60mm steel tube
S-No	
34 079 04	



Polebox 190 S

Mounting and installation products
EV-charger pole mount
NEXT GREEN POLEBOX 190 S

Model

E-No	Product name
24 803 57	Charging box mount
S-No	
34 079 01	



Technical specifications

Material	Steel, hardened steel, powder coated
Color	Graphite
Dimensions	
Weight	9 kg
Height	552 mm
Width	351 mm
Depth	295 mm
Mounting surface	190 mm
Package dimensions	
Weight	9 kg
Height	575 mm
Width	310 mm
Depth	180 mm

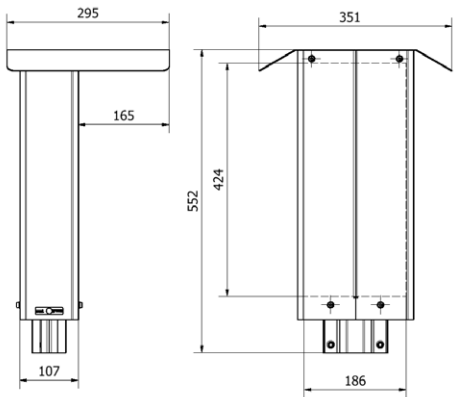
Next Green Polebox is a pole mount for two EV-chargers to be installed on a Ø 60 mm steel tube. Polebox facilitates changing an engine heater station to a charging station and can be used to replace an engine heater central. Cables can be routed inside the Polebox and the steel tube.

Polebox has a built-in distribution board for up to 2 x 5G25 electrical cable for routing to the next charging station. From the distribution board in Polebox each charger is connected using a 5G2,5 rubber cable.

Polebox comes with a DIN rail to suit a residual current circuit breaker and can be fitted with an additional extra rustas med additional DIN rail for units such as a Wi-Fi-router or a

FEATURES POLEBOX 190 S

- For mounting on a Ø 60 mm tube
- Most of the installation can be prepared indoors
- Robust steel construction
- Durable distribution board for further electrical routing
- Prepared for installation of residual current circuit breaker or 3G/4G router
- Powder coated, available in an assortment of colours. Contact Next Green for more information.



3G/4G modem or power supply. Everything fits neatly inside the box. Polebox is made of steel and powder coated for maximum durability.

Polebox is made to fit many different charger models. Screw holes for each charger are drilled upon installation.

Polebox is very easy to install. Most of the installation can be prepared indoors, such as mounting the chargers and routing the cables from the distribution board. The Polebox is then installed on the existing pole and the hood with the chargers is lifted onto it and fastened. This provides easy access to connect power cables to the board.

Fits chargers with a maximum screw distance of 190 mm wide and 430 mm high.

SELECTION OF COMPATIBLE CHARGING BOXES

- ABB Terra AC
- Charge Amps Halo
- Easee Home
- Easee Charge
- Elinta Homebox Slim
- Garo GLB
- Wallbox Pulsar
- Wallbox Copper SB
- Zaptec Go

Polebox 205 D2

Mounting and installation products

EV-charger pole mount

NEXT GREEN POLEBOX 205 D2

Model

E-No	Product name
24 804 40	Charging box mount
S-No	Polebox 205 D2
34 079 03	



Technical specifications

Material	Steel, hardened steel, powder coated
Color	Graphite
Dimensions	
Weight	11 kg
Height	552 mm
Width	362 mm
Depth	470 mm
Mounting surface	203 mm
Package dimensions	
Weight	11 kg
Height	570 mm
Width	390 mm
Depth	205 mm

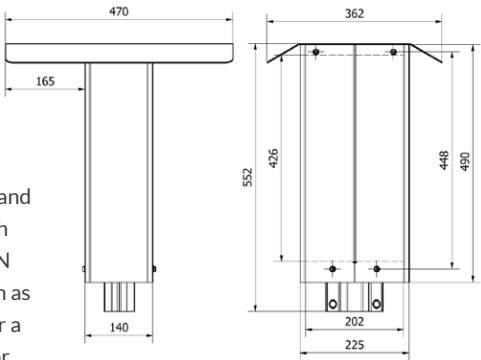
Next Green Polebox is a pole mount for EV-charging boxes for mounting on a Ø 60 mm steel tube. Polebox makes it easy, for example when changing from engine heater location to charging location and can therefore be used to replace an engine heater hood. The product is intended for feeding electrical cables inside the Polebox and the steel tube.

Polebox has a built-in distribution terminal for up to 2 x 5G25 power cable for extending the connection to the next charging post. From the distribution terminal in the Polebox, the respective charging box is then connected using a 5G2.5 rubber cable.

Polebox comes with a DIN rail to suit up to two residual current

FEATURES POLEBOX 205 D2

- For mounting two EV-chargers back-to-back
- For mounting on a Ø 60 mm tube
- Most of the installation can be prepared indoors
- Robust steel construction
- Distribution block (1.5mm2 – 25mm2)
- Prepared for mounting up to two earth fault circuit breakers, 3G / 4G router
- Powder coated, available in various colors. Contact Next Green for more information.



circuit breakers and can be fitted with an additional DIN rail for units such as a Wi-Fi-router or a 3G/4G modem or power supply. Everything fits neatly inside the box.

Polebox is made of steel and powder coated to provide the highest quality. Polebox is made to fit many different EV-charger models. Screw holes for each charger are drilled upon installation.

Polebox is very easy to install. It is prepared indoors by mounting charging boxes and unplugging the wiring from the dispersion terminal. Polebox is then put in place outside on the existing steel tube and the charger hood is lifted and fastened. This provides easy to access for screwing supply wires into the plinth.

Suitable for charging boxes with a maximum hole pattern width of 203 mm and 430 mm high.

SELECTION OF COMPATIBLE CHARGING BOXES

- ABB Terra AC
- Charge Amps Halo
- Easee Home
- Easee Charge
- Elinta Homebox Slim
- Garo GLB
- Wallbox Pulsar
- Wallbox Copper SB
- Zaptec Go

Polebox 270 S

Mounting and installation products

EV-charger pole mount

NEXT GREEN POLEBOX 270 S

Model

E-No	Product name
24 803 65	Charging box mount
S-No	Polebox 270 S
34 079 07	



Technical specifications

Material	Steel, hardened steel, powder coated
Color	Graphite
Dimensions	
Weight	10 kg
Height	552 mm
Width	432 mm
Depth	295 mm
Mounting surface	270 mm
Package dimensions	
Weight	10 kg
Height	570 mm
Width	390 mm
Depth	205 mm

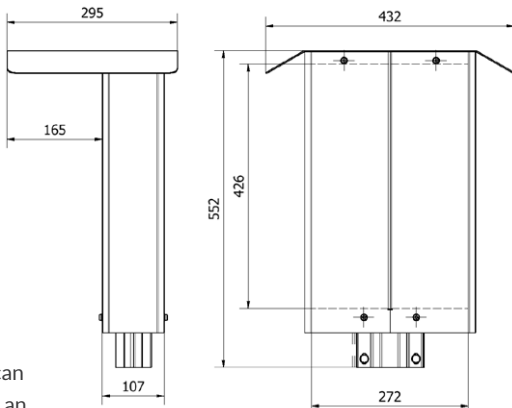
Next Green Polebox is a pole mount for EV-charging boxes for mounting on a Ø 60 mm steel tube. Polebox makes it easy, for example when changing from engine heater location to charging location and can therefore be used to replace an engine heater hood. The product is intended for feeding electrical cables inside the Polebox and the steel tube.

Polebox has a built-in distribution terminal for up to 2 x 5G25 power cable for extending the connection to the next charging post. From the distribution terminal in the Polebox, the respective charging box is then connected using a 5G2.5 rubber cable.

Polebox comes with a DIN rail to suit a residual current circuit

FEATURES POLEBOX 270 S

- For mounting on a Ø 60 mm tube
- Most of the installation can be prepared indoors
- Robust steel construction
- Distribution block (1.5mm2 – 25mm2)
- Prepared for mounting an earth fault circuit breaker, 3G / 4G router
- Powder coated, available in various colors. Contact Next Green for more information.



breaker and can be fitted with an additional DIN rail for units such as a Wi-Fi-router or a 3G/4G modem or power supply. Everything fits neatly inside the box.

Polebox is made of steel and powder coated to provide the highest quality. Polebox is made to fit many different EV-charger models. Screw holes for each charger are drilled upon installation. Polebox is very easy to install. It is prepared indoors by mounting charging boxes and unplugging the wiring from the dispersion terminal. Polebox is then put in place outside on the existing steel tube and the charger hood is lifted and fastened. This provides easy to access for screwing supply wires into the plinth.

Suitable for charging boxes with a maximum hole pattern width of 270 mm and 430 mm high.

SELECTION OF COMPATIBLE CHARGING BOXES

- Elinta Homebox
- Elinta Homebox Slim
- DEFA eRange IQ
- Norwesco Refuel
- Zaptec Pro

Polebox 270 D

Mounting and installation products
 EV-charger pole mount
 NEXT GREEN POLEBOX 270 D

Model

E-No	Product name
27 000 70	Charging box mount
S-No	Polebox 270 D
34 079 08	



Technical specifications

Material	Steel, High-strength steel
Color	Graphite grey
Dimensions	
Weight	10 kg
Height	552 mm
Width	432 mm
Depth	437 mm
Mounting surface	270 mm
Package dimensions	
Weight	10 kg
Height	595 mm
Width	410 mm
Depth	210 mm

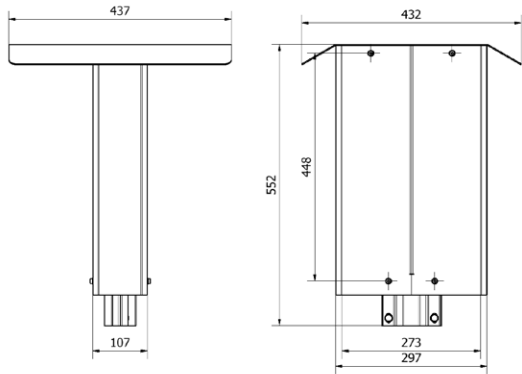
Next Green Polebox is a pole mount for EV-charging boxes for mounting on a Ø 60 mm steel tube. Polebox makes it easy, for example when changing from engine heater location to charging location and can therefore be used to replace an engine heater hood. The product is intended for feeding electrical cables inside the Polebox and the steel tube.

Polebox has a built-in distribution terminal for up to 2 x 5G25 power cable for extending the connection to the next charging post. From the distribution terminal in the Polebox, the respective charging box is then connected using a 5G2.5 rubber cable.

Polebox comes with a DIN rail to suit a residual current circuit

FEATURES POLEBOX 270 D

- For mounting two EV-chargers back-to-back
- For mounting on a Ø 60 mm tube
- Most of the installation can be prepared indoors
- Robust steel construction
- Distribution block (1.5mm2 – 25mm2)
- Prepared for mounting an earth fault circuit breaker, 3G / 4G router
- Powder coated, available in various colors. Contact Next Green for more information.



breaker and can be fitted with an additional DIN rail for units such as a Wi-Fi-router or a 3G/4G modem or power supply. Everything fits neatly inside the box.

SELECTION OF COMPATIBLE CHARGING BOXES

- Elinta Homebox
- Elinta Homebox Slim
- DEFA eRange IQ
- Norwesco Refuel
- Zaptec Pro

Polebox is made of steel and powder coated to provide the highest quality. Polebox is made to fit many different EV-charger models. Screw holes for each charger are drilled upon installation. Polebox is very easy to install. It is prepared indoors by mounting charging boxes and unplugging the wiring from the dispersion terminal. Polebox is then put in place outside on the existing steel tube and the charger hood is lifted and fastened. This provides easy to access for screwing supply wires into the plinth.

Suitable for charging boxes with a maximum hole pattern width of 270 mm and 430 mm high.

Polebox 330 S

Mounting and installation products
 EV-charger pole mount
 NEXT GREEN POLEBOX 330 S

Model

E-No	Product name
24 803 66	Charging box mount
	Polebox 330 S



Technical specifications

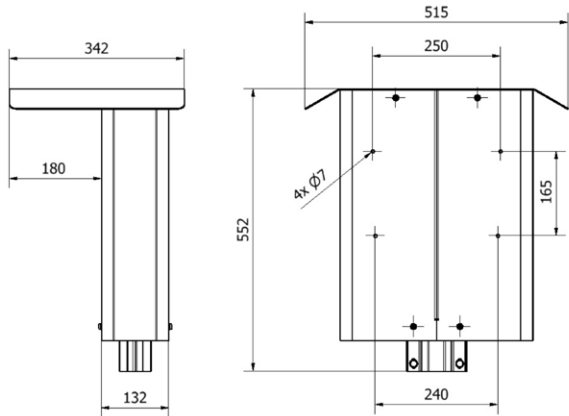
Material	Steel, High-strength steel
Color	Graphite grey
Dimensions	
Weight	12 kg
Height	552 mm
Width	515 mm
Depth	342 mm
Mounting surface	330 mm
Package dimensions	
Weight	12 kg
Height	570 mm
Width	390 mm
Depth	205 mm

Next Green Polebox is a pole mount for EV-charging boxes for mounting on a Ø 60 mm steel tube. Polebox makes it easy, for example when changing from engine heater location to charging location and can therefore be used to replace an engine heater hood. The product is intended for feeding electrical cables inside the Polebox and the steel tube.

Polebox has a built-in distribution terminal for up to 2 x 5G25 power cable for extending the connection to the next charging post. From the distribution terminal in the Polebox, the

FEATURES POLEBOX 330 S

- Pre-cut hole pattern for Charge Amps Aura
- For mounting on a Ø 60 mm tube
- Most of the installation can be prepared indoors
- Robust steel construction
- Distribution block (1.5mm2 – 25mm2)
- Prepared for mounting an earth fault circuit breaker, 3G / 4G router
- Powder coated, available in various colors. Contact Next Green for more information.



respective charging box is then connected using a 5G2.5 rubber cable.

Polebox comes with a DIN rail to suit a residual current circuit breaker and can be fitted with an additional DIN rail for units such as a Wi-Fi-router or a 3G/4G modem or power supply. Everything fits neatly inside the box.

Polebox is made of steel and powder coated to provide the highest quality. Polebox is made to fit many different EV-charger models. Screw holes for each charger are drilled upon installation. Polebox is very easy to install. It is prepared indoors by mounting charging boxes and unplugging the wiring from the dispersion terminal. Polebox is then put in place outside on the existing steel tube and the charger hood is lifted and fastened. This provides easy to access for screwing supply wires into the plinth.

Polebox 330 has as precut hole pattern to suit Charge Amps Aura.

Polebox 330 D

Mounting and installation products
 EV-charger pole mount
 NEXT GREEN POLEBOX 330 D

Model

E-No	Product name
27 002 50	Charging box mount Polebox 330 D



Technical specifications

Material	Steel, High-strength steel
Color	Graphite grey

Dimensions	
Weight	12 kg
Height	552 mm
Width	515 mm
Depth	342 mm
Mounting surface	330 mm

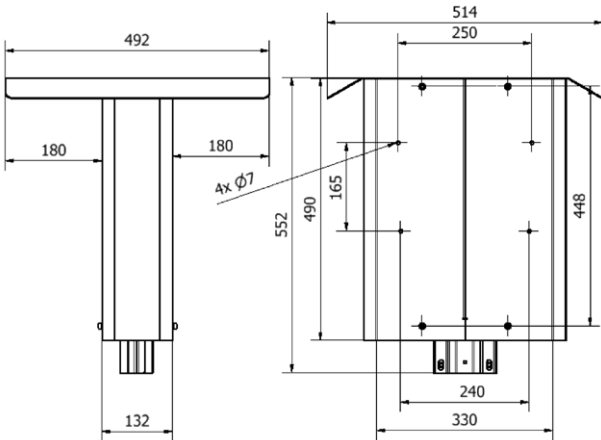
Package dimensions	
Weight	12 kg
Height	570 mm
Width	390 mm
Depth	205 mm

Next Green Polebox is a pole mount for EV-charging boxes for mounting on a Ø 60 mm steel tube. Polebox makes it easy, for example when changing from engine heater location to charging location and can therefore be used to replace an engine heater hood. The product is intended for feeding electrical cables inside the Polebox and the steel tube.

Polebox has a built-in distribution terminal for up to 2 x 5G25 power cable for extending the connection to the next charging post. From the distribution terminal in the Polebox, the respective charging box is then connected using a 5G2.5 rubber cable.

FEATURES POLEBOX 330 D

- Pre-cut hole pattern for Charge Amps Aura
- For mounting two chargers back-to-back
- For mounting on a Ø 60 mm tube
- Most of the installation can be prepared indoors
- Robust steel construction
- Distribution block (1.5mm2 – 25mm2)
- Prepared for mounting an earth fault circuit breaker, 3G / 4G router
- Powder coated, available in various colors. Contact Next Green for more information.



Polebox comes with a DIN rail to suit a residual current circuit breaker and can be fitted with an additional DIN rail for units such as a Wi-Fi-router or a 3G/4G modem or power supply. Everything fits neatly inside the box.

Polebox is made of steel and powder coated to provide the highest quality. Polebox is made to fit many different EV-charger models. Screw holes for each charger are drilled upon installation. Polebox is very easy to install. It is prepared indoors by mounting charging boxes and unplugging the wiring from the dispersion terminal. Polebox is then put in place outside on the existing steel tube and the charger hood is lifted and fastened. This provides easy to access for screwing supply wires into the plinth.

Polebox 330 has as precut hole pattern to suit Charge Amps Aura.

Polebox 205 ES

Mounting and installation products
 EV-charger pole mount
 NEXT GREEN POLEBOX 205 ES

Model

E-No	Product name
24 803 64	Charging box mount Polebox 205 ES



Technical specifications

Material	Steel, High-strength steel
Color	Graphite grey

Dimensions	
Weight	9 kg
Height	592 mm
Width	367 mm
Depth	295 mm
Mounting surface	205 mm

Package dimensions	
Weight	9 kg
Height	600 mm
Width	400 mm
Depth	300 mm

Next Green Polebox is a pole mount for EV-charging boxes for mounting on a Ø 60 mm steel tube. Polebox makes it easy, for example when changing from engine heater location to charging location and can therefore be used to replace an engine heater hood. The product is intended for feeding electrical cables inside the Polebox and the steel tube.

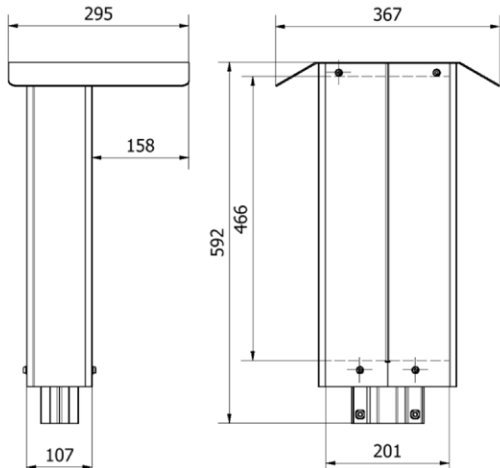
Polebox has a built-in distribution terminal for up to 2 x 5G25 power cable for extending the connection to the next charging post. From the distribution terminal in the Polebox, the respective charging box is then connected using a 5G2.5 rubber cable.

Polebox 205 ES

Mounting and installation products
 EV-charger pole mount
 NEXT GREEN POLEBOX 205 ES

FEATURES POLEBOX 205 ES

- Pre-cut hole pattern for Ensto One
- For mounting on a Ø 60 mm tube
- Most of the installation can be prepared indoors
- Robust steel construction
- Distribution block (1.5mm2 – 25mm2)
- Prepared for mounting an earth fault circuit breaker, 3G / 4G router
- Powder coated, available in various colors. Contact Next Green for more information.



Polebox comes with a DIN rail to suit a residual current circuit breaker and can be fitted with an additional DIN rail for units such as a Wi-Fi-router or a 3G/4G modem or power supply. Everything fits neatly inside the box.

Polebox is made of steel and powder coated to provide the highest quality. Polebox is made to fit many different EV-charger models. Screw holes for each charger are drilled upon installation. Polebox is very easy to install. It is prepared indoors by mounting charging boxes and unplugging the wiring from the dispersion terminal. Polebox is then put in place outside on the existing steel tube and the charger hood is lifted and fastened. This provides easy to access for screwing supply wires into the plinth.

Polebox 205 ES is equipped with a hole pattern to fit one Ensto One charging box.

Polebox 205 ED

Mounting and installation products

EV-charger pole mount

NEXT GREEN POLEBOX 205 ED

Model

E-No	Product name
27 001 77	Charging box mount
	Polebox 205 ED



Example image. Assembly with charging box Ensto One

Technical specifications

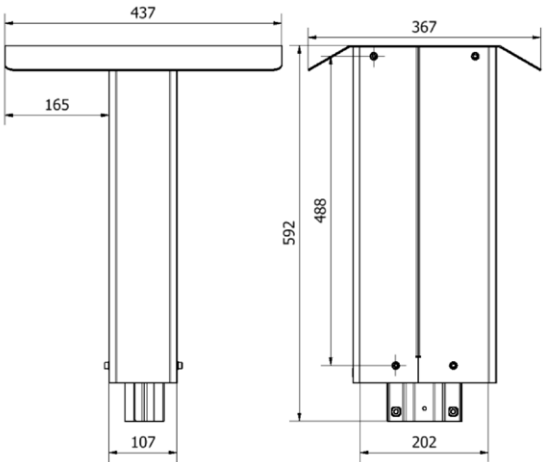
Material	Steel, High-strength steel
Color	Graphite grey
Dimensions	
Weight	9 kg
Height	592 mm
Width	367 mm
Depth	437 mm
Mounting surface	205 mm
Package dimensions	
Weight	9 kg
Height	600 mm
Width	400 mm
Depth	450 mm

Next Green Polebox is a pole mount for EV-charging boxes for mounting on a Ø 60 mm steel tube. Polebox makes it easy, for example when changing from engine heater location to charging location and can therefore be used to replace an engine heater hood. The product is intended for feeding electrical cables inside the Polebox and the steel tube.

Polebox has a built-in distribution terminal for up to 2 x 5G25 power cable for extending the connection to the next charging post. From the distribution terminal in the Polebox, the respective charging box is then connected using a 5G2.5 rubber cable.

FEATURES POLEBOX 205 ED

- Pre-cut hole pattern for Ensto One
- For mounting two chargers back-to-back
- For mounting on a Ø 60 mm tube
- Most of the installation can be prepared indoors
- Robust steel construction
- Distribution block (1.5mm2 – 25mm2)
- Prepared for mounting an earth fault circuit breaker, 3G / 4G router
- Powder coated, available in various colors. Contact Next Green for more information.



Polebox comes with a DIN rail to suit up to two residual current circuit breakers and can be fitted with an additional DIN rail for units such as a Wi-Fi-router or a 3G/4G modem or power supply. Everything fits neatly inside the box.

Polebox is made of steel and powder coated to provide the highest quality. Polebox is made to fit many different EV-charger models. Screw holes for each charger are drilled upon installation. Polebox is very easy to install. It is prepared indoors by mounting charging boxes and unplugging the wiring from the dispersion terminal. Polebox is then put in place outside on the existing steel tube and the charger hood is lifted and fastened. This provides easy to access for screwing supply wires into the plinth.

Polebox 205 ED is equipped with a hole pattern to fit Ensto One charging boxes.



Better quality, more efficient product development, shorter lead times, and faster delivery times. We feel proud to say that not only are our products **Designed in Sweden** but also **Made in Sweden**, which adds both quality and value. The benefits of Swedish production are many.

Thanks to our team of skilled designers, we are able to quickly design new robust products for quick and easy installation to meet the high demands of both service technicians and property owners. We design and develop all our products in-house and all manufacturing is done in Sweden.



Our products are not only **Designed in Sweden** but also **Made in Sweden**



Charging box mount **Polebox 205 D2**



Charging box mount **Polebox 330 S**



Charging box mount **Poleplate 165**



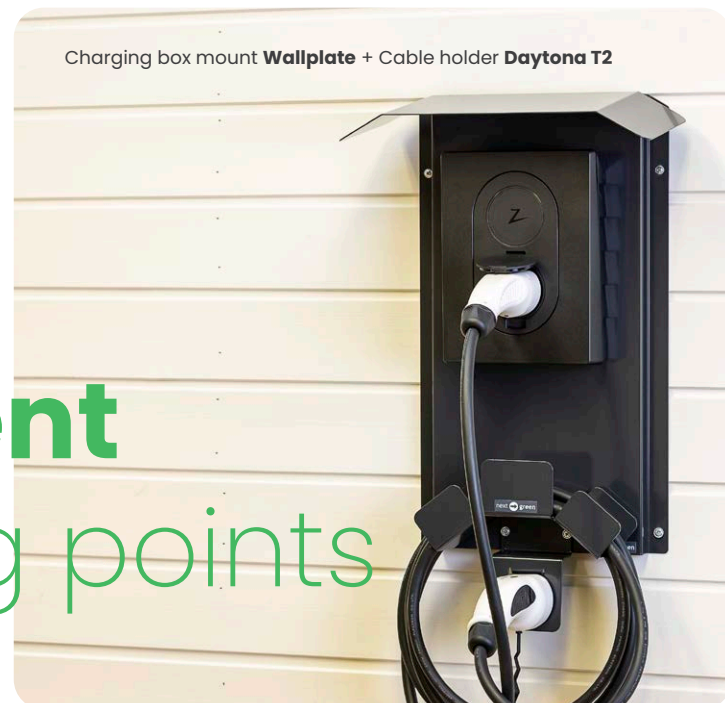
Ground mount **GP60 - 160 Combo**



Pole mount
beam and facade 60-108



Charging box mount **Poleplate 200 A +**
Pole mount beam and facade 60-108



Charging box mount **Wallplate** + Cable holder **Daytona T2**

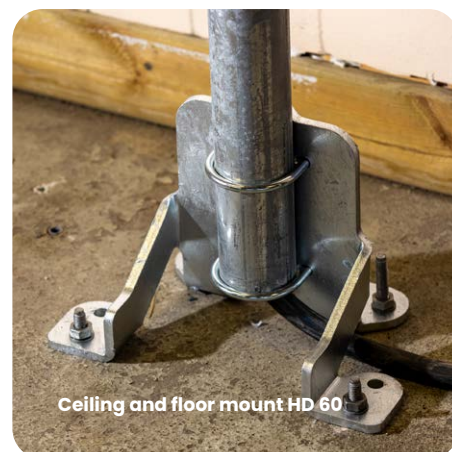
Product development for charging points



Collision protection Pole 108-750 +
Ground mount GP60 - 160 Combo +
Foundation GP60



Collision protection Pole 108-750



Ceiling and floor mount **HD 60**

At Next Green we value our cooperation with electricians highly. Thanks to this cooperation, our solutions come from the field – the reality. Often a wish arises for one product that does not exist or that can be improved and just like that many of our products have not only come to the drawing board but also seen the reality.

We continuously work on product development using valuable input from our customers. We welcome customer ideas and are easy to get in touch with. We develop our products in-house and always aim to make them as user friendly and cost effective as possible. Manufacturing is done exclusively in Sweden and the completed products are shipped from us in Mora in Sweden.

Our mounting and installation products have been developed and designed in cooperation with electricians.

Do you want to know more? Don't hesitate to contact us!



Charging box mount **Polebox 205 D2** +
Cable holder **Daytona T2** +
Bracket set for Ø 60 mm steel tube

Poleplate 160 E

Mounting and installation products
EV-charger pole mount
NEXT GREEN POLEPLATE 160 E

Model

E-No	Product name
27 000 68	Charging box mount Poleplate 160 E

FEATURES POLEPLATE 160 E

- Pre-cut hole pattern to suit Easee EV-charger
- For mounting on a Ø 60 mm tube
- Robust steel construction
- Powder coated, available in various colors. Contact Next Green for more information



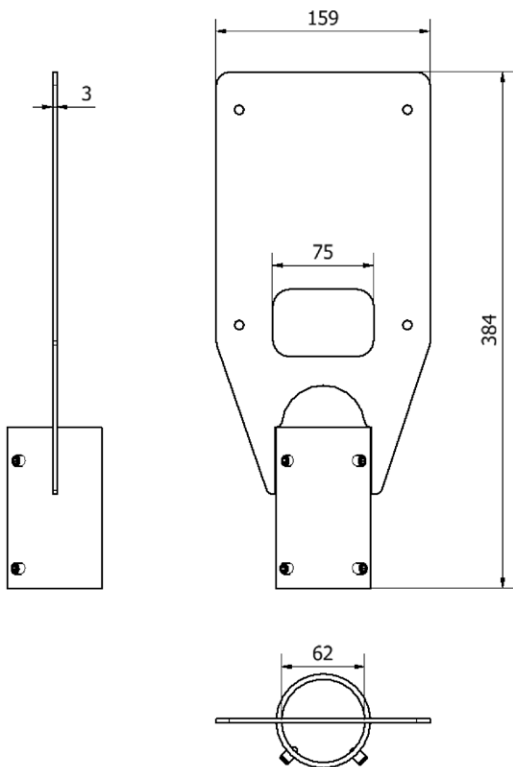
Example image. Assembly with charging box Easee..

Technical specifications

Material	Steel, powder coated
Color	Jet Black – RAL9005
Dimensions	
Weight	1,7 kg
Height	384 mm
Width	159 mm
Package dimensions	
Weight	2,0 kg
Height	390 mm
Width	190 mm
Depth	60 mm

Next Green Poleplate 160 E is a EV-charger mount for installation on a Ø 60 mm steel tube. Poleplate is made of Swedish steel and powder coated to provide the highest durability and quality. Poleplate enables easy mounting of a charging box to a steel tube.

Poleplate is manufactured in Sweden for the Nordic climate. It has a powder-coated design to withstand wind and weather. The Poleplate charging box holder is a cost-effective pole mount. Poleplate 160 E facilitates changing an engine heater station to a charging station and can be used to replace an engine heater central .



SELECTION OF COMPATIBLE CHARGING BOXES

- Easee

Poleplate 165

Mounting and installation products
EV-charger pole mount
NEXT GREEN POLEPLATE 165

Model

E-No	Product name
27 000 19	Charging box mount
S-No	Poleplate 165
34 079 06	

FEATURES POLEPLATE 165

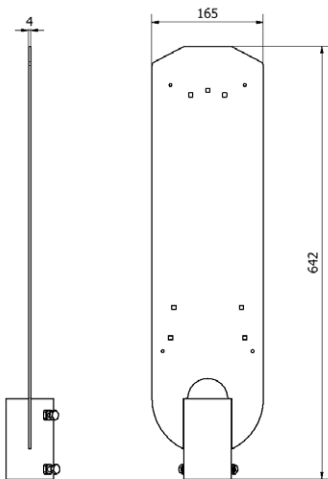
- Pre-cut hole pattern to suit Garo GLB, Ensto One and Elinta Homebox Slim EV-chargers
- For mounting on a Ø 60 mm tube
- Robust steel construction
- Powder coated, available in various colors. Contact Next Green for more information



Technical specifications

Material	Steel, powder coated
Color	Graphite grey
Dimensions	
Weight	3,5 kg
Height	642 mm
Width	165 mm
Package dimensions	
Weight	3,5 kg
Height	650 mm
Width	180 mm
Depth	6 mm

Next Green Poleplate 165 is a EV-charger mount for installation on a Ø 60 mm steel tube. Poleplate is made of Swedish steel and powder coated to provide the highest durability and quality. Poleplate enables easy mounting of a charging box to a steel tube. Poleplate is manufactured in Sweden for the Nordic climate. It has a powder-coated design to withstand wind and weather. The Poleplate charging box holder is a cost-effective



SELECTION OF COMPATIBLE CHARGING BOXES

- Garo GLB
- Ensto One
- Elinta Homebox Slim



Example image. Installation with charging box Ensto One.

pole mount.

Poleplate 165 facilitates changing an engine heater station to a charging station and can be used to replace an engine heater central .

Poleplate 200 A

Mounting and installation products

EV-charger pole mount

NEXT GREEN POLEPLATE 200 A

Model

E-No	Product name
27 001 52	Charging box mount
S-No	Poleplate 200 A
34 079 05	

FEATURES POLEPLATE 200 A

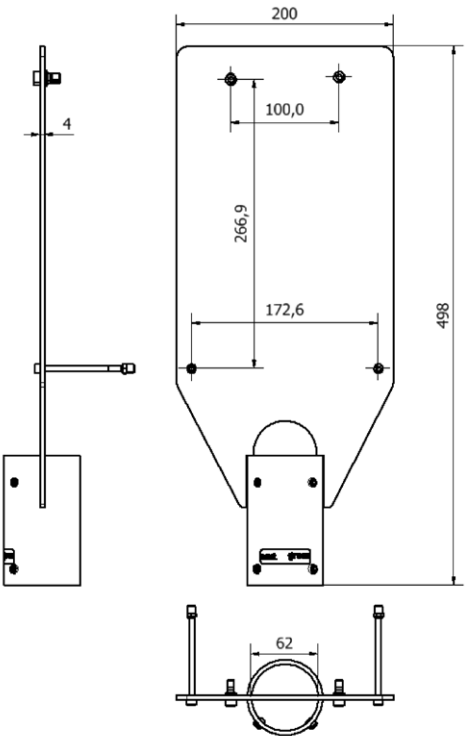
- Pre-cut hole pattern to suit ABB Terra EV-charger
- For mounting on a Ø 60 mm tube
- Robust steel construction
- Powder coated, available in various colors. Contact Next Green for more information



Example image. Assembly with charging box ABB Terra.

Technical specifications

Material	Steel, powder coated
Color	Graphite grey
Dimensions	
Weight	2,0 kg
Height	498 mm
Width	200 mm
Package dimensions	
Weight	2,0 kg
Height	560 mm
Width	250 mm
Depth	60 mm



SELECTION OF COMPATIBLE CHARGING BOXES

- ABB Terra

Next Green Poleplate 200 A is a EV-charger mount for installation on a Ø 60 mm steel tube. Poleplate is made of Swedish steel and powder coated to provide the highest durability and quality.

Poleplate enables easy mounting of a charging box to a steel tube.

Poleplate is manufactured in Sweden for the Nordic climate. It has a powder-coated design to withstand wind and weather. The Poleplate charging box holder is a cost-effective pole mount.

Poleplate 200 A facilitates changing an engine heater station to a charging station and can be used to replace an engine heater central .

Poleplate 225 Z

Mounting and installation products

EV-charger pole mount

NEXT GREEN POLEPLATE 225 Z

Model

E-No	Product name
27 002 51	Charging box mount
	Poleplate 225 Z

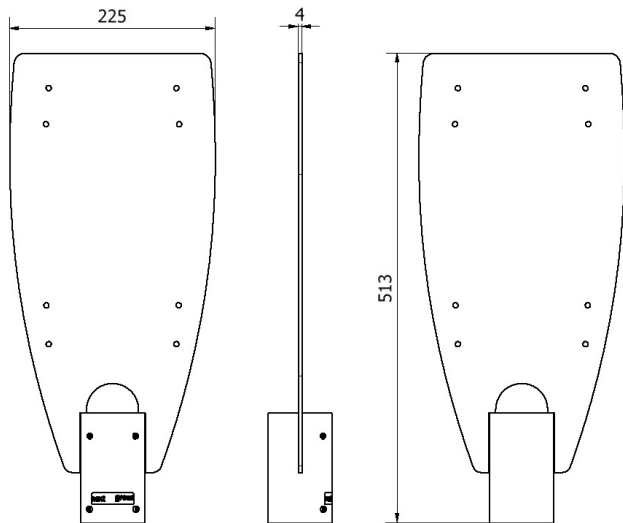
FEATURES POLEPLATE 225 Z

- Pre-cut hole pattern to suit Zaptec Pro and Zaptec Go EV-chargers
- For mounting on a Ø 60 mm tube
- Robust steel construction
- Powder coated, available in various colors. Contact Next Green for more information



Technical specifications

Material	Steel, powder coated
Color	Graphite grey
Dimensions	
Weight	3,5 kg
Height	513 mm
Width	225 mm
Package dimensions	
Weight	3,5 kg
Height	520 mm
Width	230 mm
Depth	60 mm



SELECTION OF COMPATIBLE CHARGING BOXES

- Zaptec Pro
- Zaptec Go

Next Green Poleplate 225 Z is a EV-charger mount for installation on a Ø 60 mm steel tube. Poleplate is made of Swedish steel and powder coated to provide the highest durability and quality.

Poleplate enables easy mounting of a charging box to a steel tube.

Poleplate is manufactured in Sweden for the Nordic climate. It has a powder-coated design to withstand wind and weather. The Poleplate charging box holder is a cost-effective pole mount.

Poleplate 225 Z facilitates changing an engine heater station to a charging station and can be used to replace an engine heater central .

Poleplate 300 Ceiling

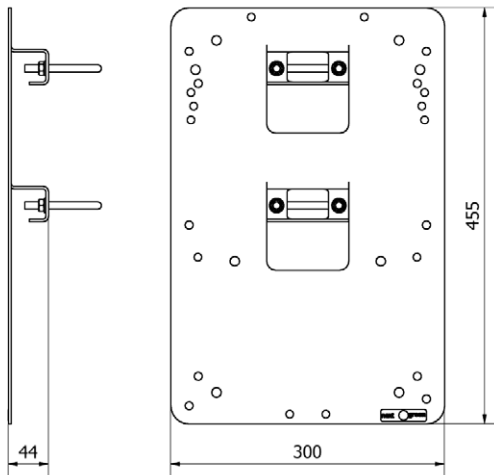
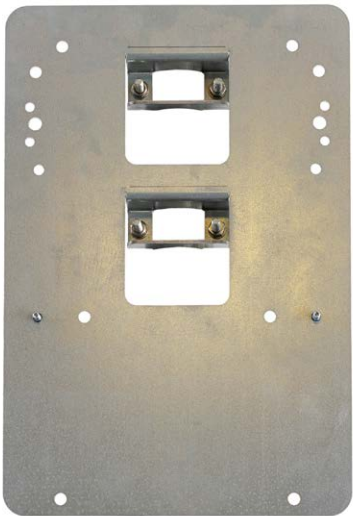
Mounting and installation products
EV-charger pole mount
NEXT GREEN POLEPLATE 300 CEILING

Model

E-No	Product name
27 004 04	Poleplate 300 Ceiling

FEATURES POLEPLATE 300 CEILING

- Laser cut hole pattern for various EV-chargers
- For ceiling mounting on a Ø 60 mm tube
- Robust steel construction



Technical specifications

Material	Magnelis Steel
Color	Steel
Dimensions	
Weight	3 kg
Height	455 mm
Width	300 mm
Package dimensions	
Weight	3,5 kg
Height	488 mm
Width	301 mm
Depth	60 mm

Next Green Poleplate 300 Ceiling is a steel tube bracket for charging boxes, intended for ceiling mounting on 60 mm steel tube. Poleplate is made of steel. Poleplate is designed to easily mount a charging box.

Poleplate is manufactured in Sweden for the Nordic climate. Charging box holder Poleplate is a cost-effective pole mount.



SELECTION OF COMPATIBLE CHARGING BOXES

- Alfen Eve Double Pro-line
- Charge Amps Aura
- CTEK Chargestorm
- DEFA eRange Duo
- Ensto Wallbox
- Garo Twin
- Waybler

Example image. Assembly with charging box Charge Amps Aura.

Poleplate facilitates, for example, the installation of a charging box in a parking garage hanging from the ceiling.

Poleplate 330

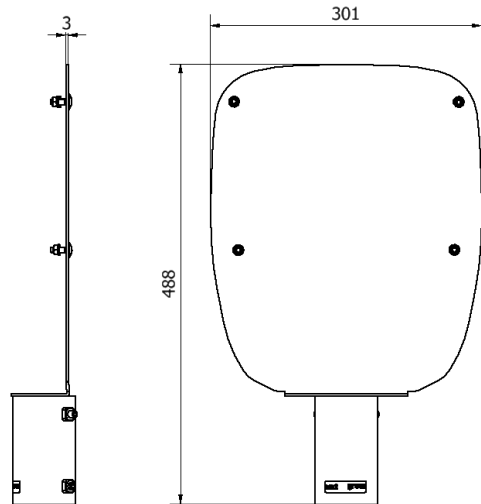
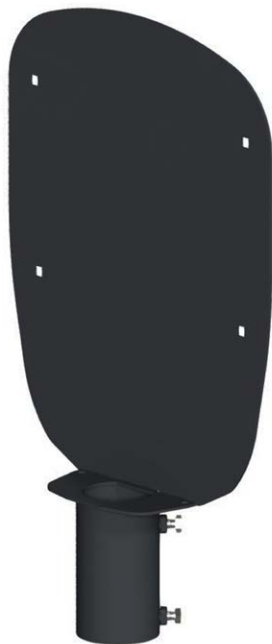
Mounting and installation products
EV-charger pole mount
NEXT GREEN POLEPLATE 330

Model

E-No	Product name
27 000 20	Charging box mount Poleplate 330

FEATURES POLEPLATE 330

- Pre-cut hole pattern to suit Charge Amps Aura EV-charger
- For mounting on a Ø 60 mm tube
- Robust steel construction
- Powder coated, available in various colors. Contact Next Green for more information.

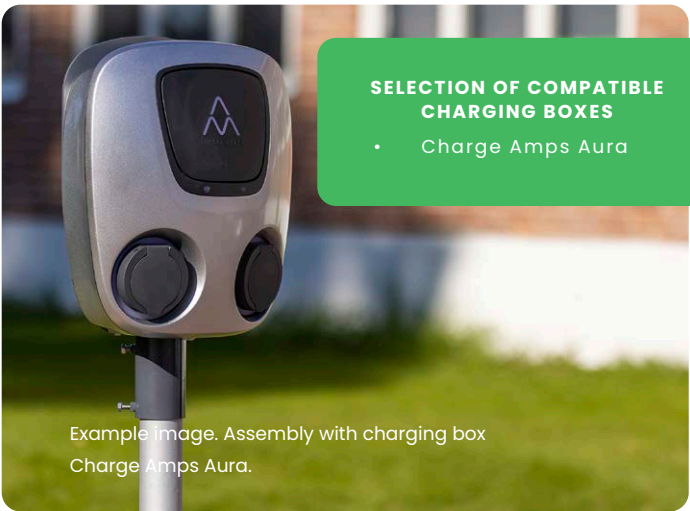


Technical specifications

Material	Steel, powder coated
Color	Graphite grey
Dimensions	
Weight	3,2 kg
Height	488 mm
Width	301 mm
Package dimensions	
Weight	3,2 kg
Height	500 mm
Width	310 mm
Depth	60 mm

Next Green Poleplate is a EV-charger mount for installation on a Ø 60 mm steel tube. Poleplate is made of Swedish steel and powder coated to provide the highest durability and quality. Poleplate enables easy mounting of a charging box to a steel tube.

Poleplate is manufactured in Sweden for the Nordic climate. It



SELECTION OF COMPATIBLE CHARGING BOXES

- Charge Amps Aura

Example image. Assembly with charging box Charge Amps Aura.

has a powder-coated design to withstand wind and weather. The Poleplate charging box holder is a cost-effective pole mount. Poleplate 330 facilitates changing an engine heater station to a charging station and can be used to replace an engine heater central.

Charging box pole Stepped 108-60

Mounting and installation products
Charging box pole
NEXT GREEN Charging box pole
Stepped 108-60

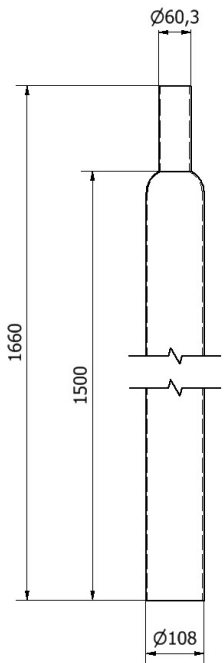
Model

E-No	Product name
27 000 22	Next Green charging box pole Stepped 108 – 60



FEATURES

- Allows extra powerful and stable mounting of charging boxes
- Insert in Ø 108 mm foundation
- Ø 60 mm top tube
- Galvanized
- Can be provided powder coated in any color. Contact Next Green for more information.



Technical specifications

Material	Galvanized steel – SS-EN ISO 1461
Form	Stepped
Color	Galvaniserad
Attachment	Insert
Dimensions	
Weight	12 kg
Length	1660 mm
Base diameter	108 mm
Top diameter	60 mm
Foundation insert	500 mm

Next Green - Charging box pole Stepped 108-60 is a steel post with a base diameter of 108 mm and root-adapted for a plug-in foundation. Perfect for Next Green Foundation GP108 and Next Green charging box holder Polebox series.

Accessories

Foundation GP108 can be ordered from separate item number

Item number	Product name
24120001	Foundation GP108



Gives a solid and robust impression for all charging boxes and is particularly suited for heavier charging boxes and charging box holders.

Can be powder coated in any RAL color.

Collision protection Pole 108-750

Mounting and installation products
Collision protection
NEXT GREEN Collision protection Pole
108-750

Model

E-No	Product name
27 002 96	Collision protection Pole 108-750



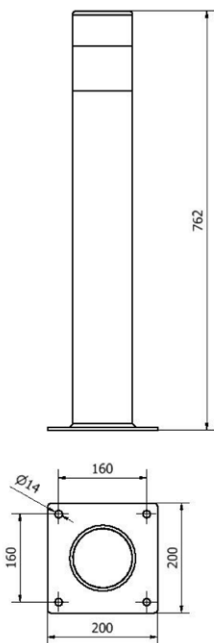
Technical specifications

Material	Galvanized steel – SS-EN ISO 1461 Weatherproof reflectivedecal
Dimensions	
Weight	8,9 kg
Height	762 mm
Width	200 mm
Depth	200 mm

Next Green – Collision protection Pole 108-750 protects your charging station from being impacted by a vehicle. The impact protection is installed either directly on a concrete base or in a Ø 60 mm base together with Ground mount GP60-160 Combo (Enumber 27 000 69).
The Collision protection pole 108-750 has a pole diameter of 108 mm and a height of 750 mm. The base plate has a CC distance of 160 mm and an outer dimension of 200 mm. The impact protection can alert drivers to your charging station, preventing it from being damaged.

FEATURES

- Protects the charging station against being run over and alerts drivers
- Hole pattern CC 160 mm
- Can be installed directly on a concrete base
- For installation in a Ø 60 mm (requires accessory E-no 27 000 69)
- Robust galvanized steel construction
- Weatherproof reflective decal



Accessories

Base for Ø 60 mm insert

E-No	Product name
27 000 69	Ground mount GP60-160 Combo

E-No	Product name
27 000 71	Foundation GP60



Ceiling and floor mount HD 60

Mounting and installation products
Pole tube mount
NEXT GREEN Ceiling and floor mount
HD 60

Model

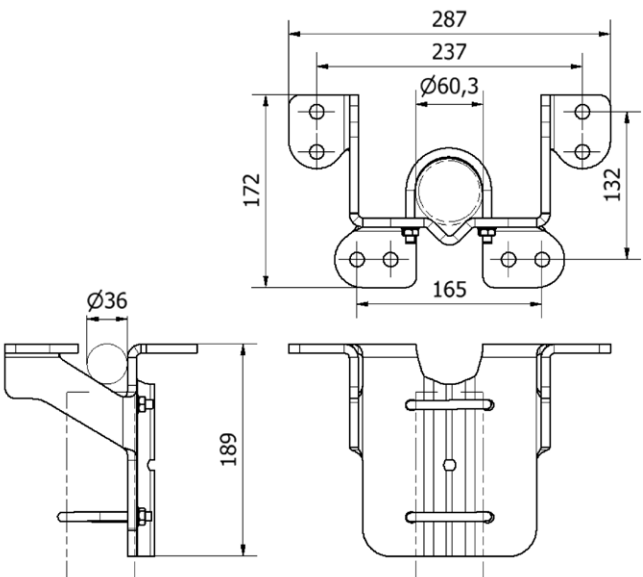
E-No	Product name
27 001 76	Ceiling and floor mount HD 60

FEATURES

- Pre-cut hole pattern for mounting on ceilings or floors
- Designed to enable cable entry 360°
- Fits any length of Ø 60 mm steel tubes
- Safety bolt hole
- Robust galvanized steel construction



Example image. Ceiling installation.



Technical specifications

Material Galvanized steel – SS-EN ISO 1461

Dimensions	3,4 kg
Weight	189 mm
Height	287 mm
Width	172 mm

Next Green – Ceiling and floor mount HD 60 has been developed to mount a 60 mm steel tube for further installation of a charging box from the ceiling or floor, for example in a parking garage. The ceiling and floor mounts allow for cable entry 360°. The bracket comes with U-bolts for mounting 60 mm Steel tubes of any length.

Attached with expander. Screw and plug not included.

Steel tubes not included.

Accessories

Steel tubes Ø 60 mm

E-No/item number	Product name
27 003 76	Steel tube 500 mm
27 003 75	Steel tube 750 mm
27 003 74	Steel tube 1000 mm
27 001 81	Steel tube 1200 mm
27 000 28	Steel tube 1500 mm
24190021	Steel tube 2500 mm
24190022	Steel tube 2850 mm



Pole mount beam and facade 60-108

Mounting and installation products
Pole tube mount
NEXT GREEN Pole mount beam and
facade 60-108

Model

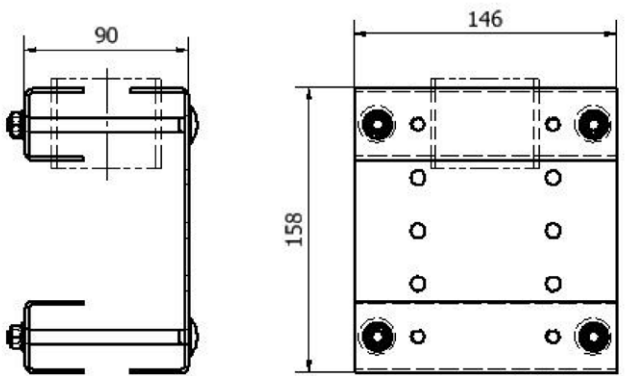
E-No	Product name
27 002 97	Pole mount beam and facade 60-108

FEATURES

- Pre-cut hole pattern for installation on wood beams, edge planks or beams, retaining walls offacades
- Fit any length of Ø 60-108 mm steel tubes
- Robust galvanized steel construction



Example of mounting on a parking plank.



Technical specifications

Material Galvanized steel

Dimensions	1,1 kg
Weight	158 mm
Height	146 mm
Width	90 mm
Depth	

Next Green – Pole mount beam and facade 60-108 is used to attach a Ø 60-108 mm steel tube to support such as dividing planks in parking lots, fender beams, wooden edge beams, retaining walls or facades for charger installation. The mounting bracket comes with bolts for attachment of any length of Ø 60 mm steel tubes.

Accessories

Steel tubes Ø 60 mm

E-No/item number	Product name
27 003 76	Steel tube 500 mm
27 003 75	Steel tube 750 mm
27 003 74	Steel tube 1000 mm
27 001 81	Steel tube 1200 mm
27 000 28	Steel tube 1500 mm
24190021	Steel tube 2500 mm
24190022	Steel tube 2850 mm



Ground mount GP60 – 160 Combo

Mounting and installation products
Foundations & Ground mounts
NEXT GREEN Ground mount GP60 – 160
Combo

Model

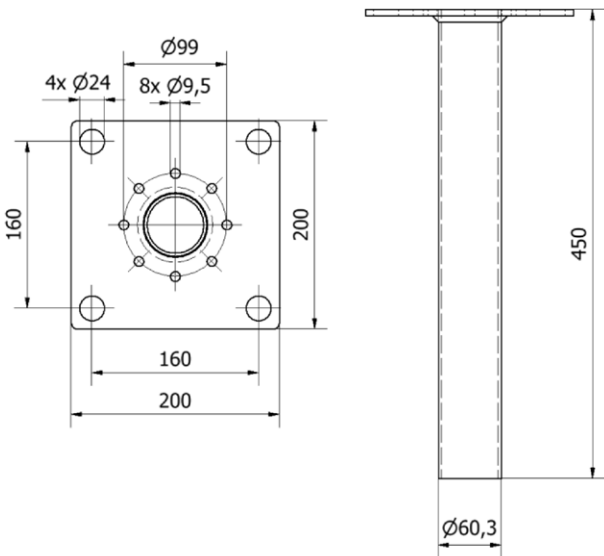
E-No	Product name
27 000 69	Ground mount GP60 – 160 Combo

FEATURES

- Hole pattern CC-160 mm. Fits different makes of charging posts
- For insert in Ø 60 mm foundation
- Robust and sturdy galvanized steel construction



Example image on the right.
Installation in Foundation GP60.



Technical specifications

Material	Galvanized steel
Dimensions	
Weight	3,5 kg
Height	450 mm
Width	200 mm
Depth	200 mm

Next Green – Ground mount GP60-160 Combo are designed to fit Ø 60 mm foundations. Ground mount GP60-160 Combo has CC dimension 160 mm and works as an adapter for charging poles with CC-160 mm foot plate.

Accessories

Foundation for 60 mm plug-in tubes

E-No	Product name
27 000 71	Foundation GP60



E-No	Product name
27 002 96	Collision protection Pole 108–750



Foundation GP

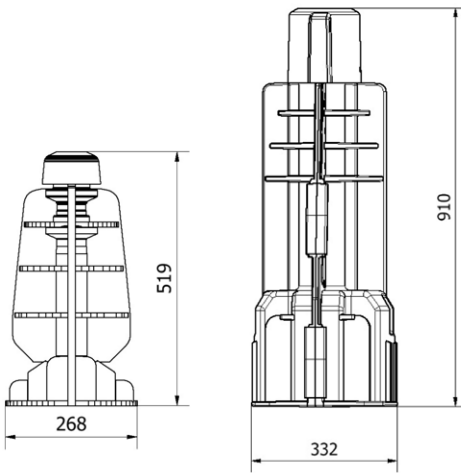
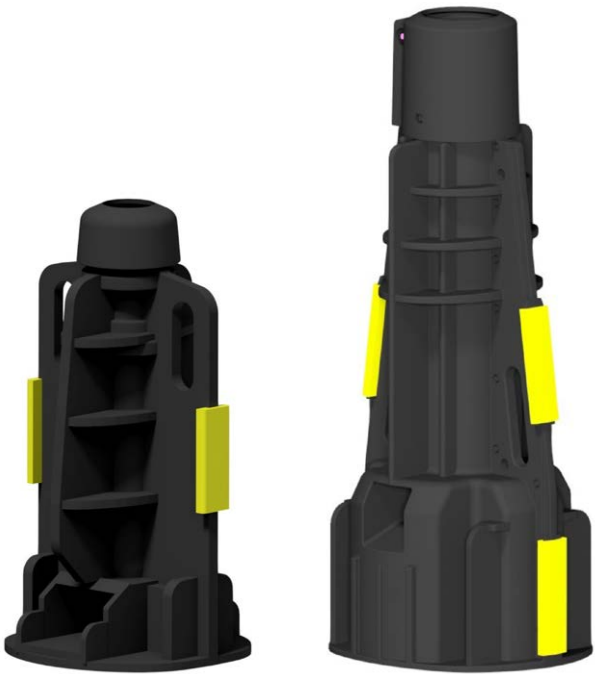
Mounting and installation products
Foundations & Ground mounts
NEXT GREEN GP108 & GP60

Model

Item number	Product name
24120001	Foundation GP108
E-No	
27 000 71	Foundation GP60

FEATURES

- Made of 100% recycled plastic
- Enables installation of Ø 60 mm and Ø 108 mm post tubes
- Safe and sustainable placement
- Significantly lighter than a similar concrete foundation
- Quick and easy mounting



Technical specifications

Material	Recycled plastic	
Color	Black and yellow	
Dimensions	GP 60	GP 108
Weight	3,5 kg	12 kg
Height	519 mm	910 mm
Width	268 mm	332 mm
Depth	268 mm	332 mm

Next Green GP Foundation is designed to increase quality and service life when installing charging stations on a Ø 60 mm pole.
This flexible product greatly helps assembly and ensures easy mounting.
GP charging station foundations are also a good choice for the environment, as they are made of 100% recycled plastic.

Accessories

Ground mount for Garo LS4 and Elinta Citycharge V2.
Steel tubes Ø 60mm

E-No/ Item number	Product name
24000011	Mount GP108 – LS4
24000012	Mount GP60 – LS4
24000005	Mount GP108 – CCV2
24000006	Mount GP60 – CCV2
27 000 69	Ground mount Combo 160



E-No/ Item number	Product name
27 003 76	Steel tube 500 mm
27 003 75	Steel tube 750 mm
27 003 74	Steel tube 1000 mm
27 001 81	Steel tube 1200 mm
27 000 28	Steel tube 1500 mm
24190021	Steel tube 2500 mm
24190022	Steel tube 2850 mm





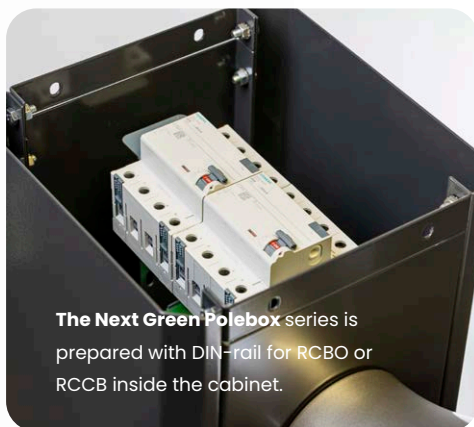
Upcoming products



Examples of upcoming products – the launch of our **Polebox Compact**.

A charger mount for smaller charging boxes. Polebox Compact has replaceable mounting plates with pre-cut screw holes to fit several charger brands on the market. Polebox compact can be used for installation of one or two charging boxes on a pole.

Don't miss our new product launches!
Stay up to date at Next Greens website nextgreen.se



The Next Green Polebox series is prepared with DIN-rail for RCBO or RCCB inside the cabinet.



Next Green offers robust and quickly assembled products – developed and manufactured in Sweden

Resellers

Our products are available from the country's major electricity wholesalers and well-stocked E-mobility resellers.

Here you will find
Next Green products:

Ahlsell
Elektroskandia
Elkedjan
KGK
Onninen
Rexel
EFUEL
Sonepar
Tibber





Next Green AB
Brudtallsvägen 14
SE-792 32 MORA
SWEDEN

www.nextgreen.se
info@nextgreen.se
+46 250 50 39 90

Follow Next Green on social media:

