

# Polebox 190 S



Mounting and installation products E-mobility  
EV-charger pole mount  
NEXT GREEN - POLEBOX 190 S

## Model

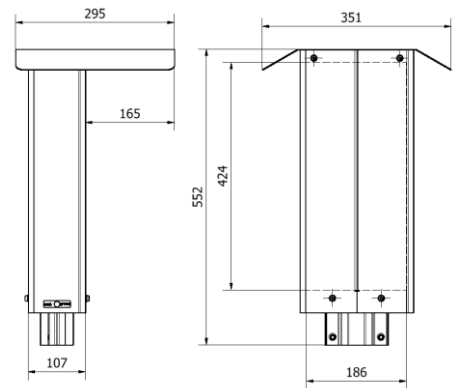
**E-No:**  
24 803 57  
**S-No:**  
35 063 01

**Product name:**  
Charging box mount Polebox 190S



## POLEBOX 190 S FEATURES

- For mounting on Ø 60 mm steel tubes
- Most of the installation can be prepared indoors
- Robust steel construction
- Distribution block has support for 1.5 mm<sup>2</sup> – 25 mm<sup>2</sup> cable, Al and Cu
- Prepared for mounting an RCCB/RCBO, 3G / 4G router
- Powder coated, available in various colors. Contact Next Green for more information.



## Technical specifications

**Material** Steel, High-strength steel, Magnelis®  
**Color** Graphite grey

### Dimensions

**Weight** 9 kg  
**Height** 552 mm  
**Width** 351 mm  
**Depth** 295 mm  
**Mounting surface** 190 mm

### Packaging dimensions

**Weight** 9 kg  
**Height** 575 mm  
**Width** 310 mm  
**Depth** 180 mm

## SELECTION OF COMPATIBLE EV-CHARGERS

- ABB Terra AC
- Charge Amps Halo
- CTEK Njord GO
- DEFA Power
- Easee
- Elinta Homebox Slim
- Garo Entity Compact
- Garo GLB
- go-e
- Phasebox 2.0
- Wallbox Pulsar
- Wallbox Copper SB
- Zaptec Go

**Next Green Polebox 190 S** is a tube or pole mount for EV-charging boxes for mounting on a 60 mm steel tube or pole. Polebox makes it easy, for example when changing from engine heater location to charging location and can therefore be used to replace an engine heater hood. The product is intended for feeding electrical cables inside the tube or pole.

Polebox has a built-in distribution terminal for up to 2 x 5G25 mm<sup>2</sup> power cable for extending the connection to the next charging post. From the distribution terminal in the Polebox, the respective charging box is then connected using a 5G2.5 mm<sup>2</sup> rubber cable.

Polebox comes with a DIN rail to mount RCCB/RCBO and can be equipped with an additional DIN rail for units such as a Wi-Fi-router or a 3G/4G modem or power supply.

Everything fits neatly inside the box. Polebox is made of Swedish steel and powder coated to provide the highest quality. Polebox is made to fit many different charger models. Mounting holes for each charger are drilled upon installation.

Polebox is very easy to install. It is prepared indoors by mounting the EV-chargers and installing the wiring from the distribution terminal. Polebox is then put in place outside on the existing steel tube and the charger hood is lifted and fastened. This provides easy access for screwing supply wires into the distribution terminal.

Suitable for EV-charging boxes with a maximum hole pattern width of 190 mm and 430 mm height.