

# Poleplate 300 Ceiling



Mounting and installation products E-mobility  
Charging box mount - pole plate  
NEXT GREEN - POLEPLATE 300 CEILING

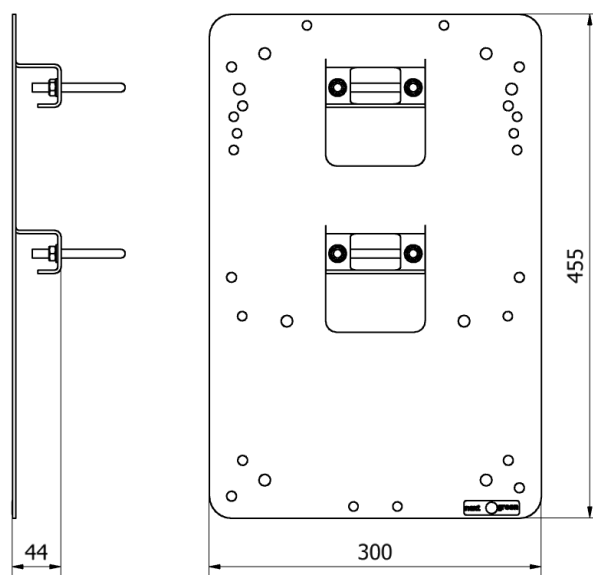
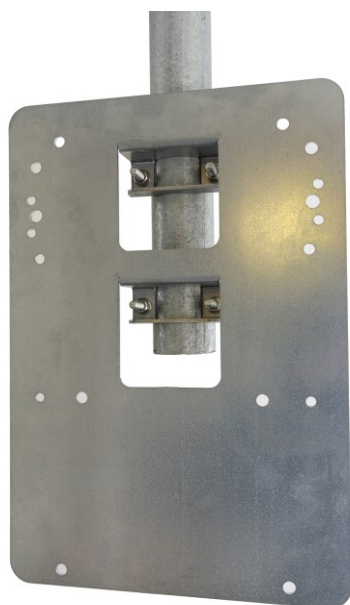
## Model

E-No:  
27 004 04  
S-No  
35 063 15

Product name:  
Poleplate 300 Ceiling

## POLEPLATE 300 CEILING FEATURES

- For ceiling mounting on a  $\varnothing$  60 mm steeltube
- Robust Magnelis® steel construction
- Lasercut hole pattern for different makes of EV-chargers. See list below.



## Technical specifications

**Material**  
Color

3 mm Magnelis® Steel  
Steel

### Dimensions

Weight 3 kg  
Height 455 mm  
Width 300 mm

### Packaging dimensions

Weight 3,5 kg  
Height 488 mm  
Width 301 mm  
Depth 60 mm

## SELECTION OF COMPATIBLE EV-CHARGERS

- Alfen Eve Double
- Charge Amps Aura
- CTEK Chargestorm
- DEFA eRange Duo
- Ensto Wallbox
- Garo Entity PRO
- Garo Twin
- Waybler Dynamic
- Zaptec Pro

**Next Green Poleplate 300 Ceiling** is a tube or pole mount bracket for EV-charging boxes, intended for ceiling mounting on 60 mm tube or pole. Poleplate is made of steel. Poleplate is designed to easily mount a charging box. Poleplate is manufactured in Sweden for the Nordic climate. Charging box holder Poleplate is a cost-effective pole mount.

Poleplate facilitates, for example, the installation of a charging box in a parking garage hanging from the ceiling.