

# Polebox Compact



Mounting and installation products E-mobility  
EV-charger pole mount  
NEXT GREEN – POLEBOX COMPACT

## Model

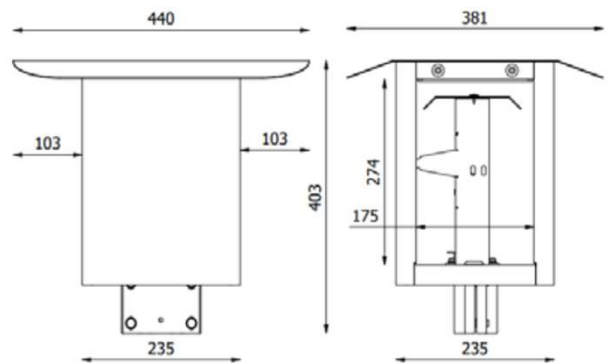
**E Number:**  
27 004 12

**Product name:**  
Charging box mount Polebox Compact



## FEATURES POLEBOX COMPACT

- Laser precut mounting plates for selected EV-chargers. The mounting plates are ordered on a separate E-number. See list below
- For mounting two chargers back-to-back
- For mounting on Ø 60 mm steel tubes
- Most of the installation can be prepared indoors
- Robust steel construction
- Distribution block (1.5mm<sup>2</sup> – 25mm<sup>2</sup>)
- Prepared for mounting up to two RCCB/RCBO, 3G / 4G router
- Powder coated, available in various colors. Contact Next Green for more information.



## Technical specifications

**Material** Steel, High-strength steel, Magnelis®  
**Color** Powder coated, Graphite grey  
**Mark** CE  
**Standard** IEC 61439-7, IP44, IK10

### Dimensions

**Weight** 8 kg  
**Height** 403 mm  
**Width** 381 mm  
**Depth** 440 mm

### Packaging dimensions

**Weight** 8,4 kg  
**Height** 460 mm  
**Width** 460 mm  
**Depth** 260 mm

## MOUNTING PLATES ARE AVAILABLE FOR THE FOLLOWING EV-CHARGERS:

- Coverplate Blank E-no: 27 004 50
- Charge Amps Halo E-no: 27 004 13
- Charge Amps Luna E-no: 27 012 86
- Easee Home E-no: 27 004 51
- Wallbox Pulsar E-no: 27 004 52
- Wallbox Copper SB E-no: 27 004 53
- Zaptec GO E-no: 27 004 58
- Wallbox Commander E-no: 27 004 59

Mounting plates are ordered separately on above order numbers. Two mounting plates are needed.

**Next Green Polebox Compact** is a pole mount for charging boxes for mounting on a Ø 60 mm steel tube. Polebox Compact makes it easy, for example when changing from engine heater location to charging location and can therefore be used to replace an engine heater hood. The product is intended for feeding electrical cables inside the pole tube.

Polebox Compact has a built-in distribution terminal for up to 2 x 5G25 mm<sup>2</sup> power cable for extending the connection to the next charging post. From the distribution terminal in the Polebox, the respective charging box is then connected using a 5G2.5 mm<sup>2</sup> rubber cable.

Polebox comes with a DIN rail to suit up to two RCCB/RCBO can be fitted with an additional DIN rail for units such as a Wi-Fi-router or a

3G/4G modem or power supply. Everything fits neatly inside the box. Polebox is made of steel steel and powder coated to provide the highest quality.

Polebox Compact is supplemented with two mounting plates. See table of mounting plates above. One mounting plate per side is required.

Polebox is very easy to install. It can be prepared indoor by mounting charging boxes and unplugging the wiring from the dispersion terminal. Polebox is then put in place outside on the existing steel tube and the charger hood is lifted and fastened. This provides easy to access for screwing supply wires into the plinth.

The hood with the EV charger(s) is lifted and hooked up. It is then easy to access to screw the supply cables into the terminal.